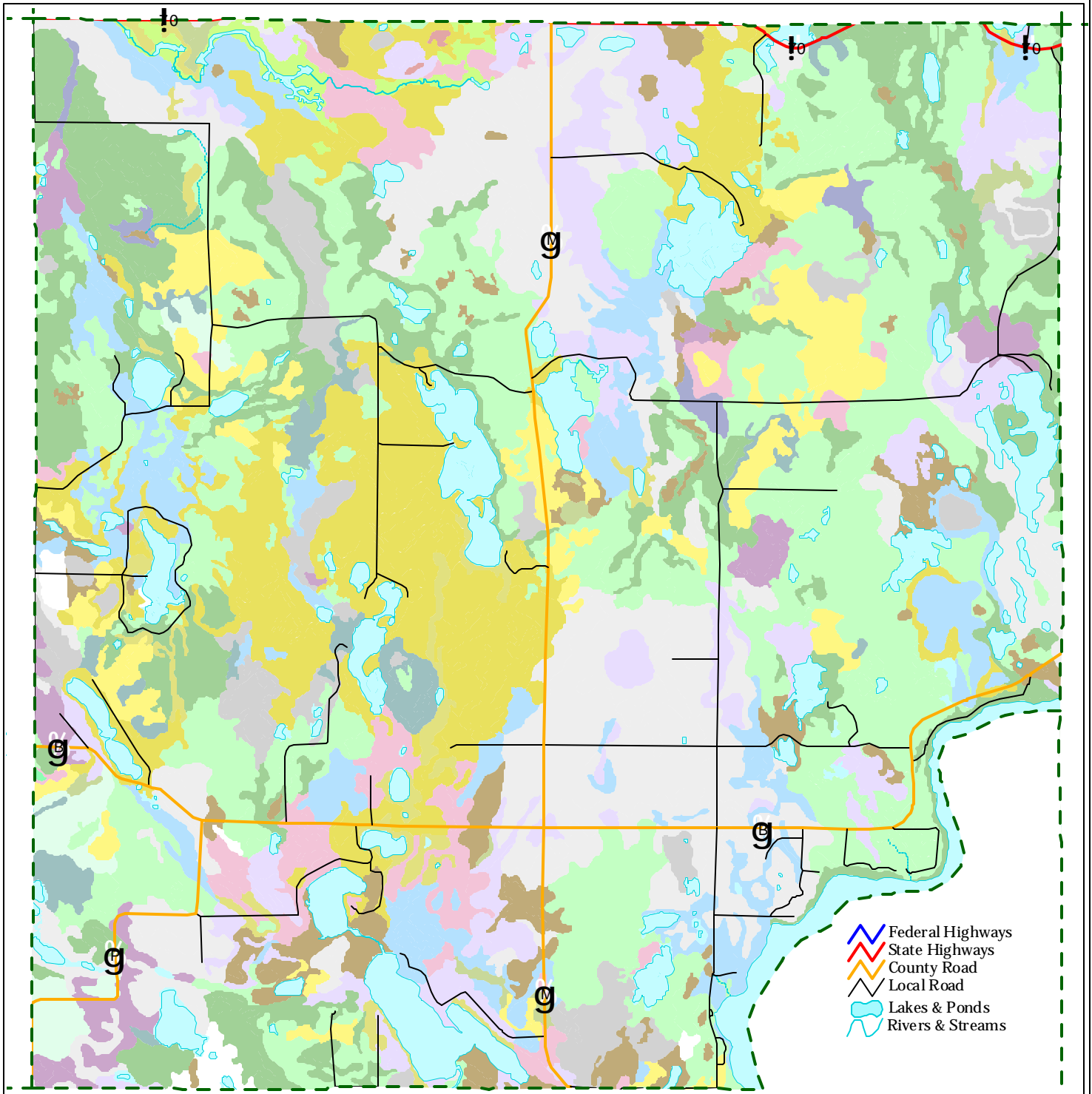
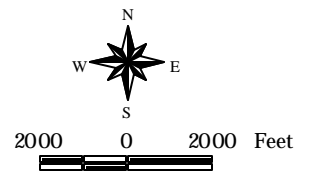


# Soil Types Town of Madge



- Soil Type
- Aftad Fine Sandy Loam
  - Amery Sandy Loam
  - Amery-rosholt Complex
  - Antigo Silt Loam
  - Barronett Silt Loam
  - Capitola Muck
  - Chetek Sandy Loam
  - Cress Sandy Loam
  - Cress-rosholt Complex
  - Dody Muck
  - Fenander Fine Sandy Loam
  - Fordum Silt Loam,
  - Freeon, Very Stony-freeon Complex

- Fremstadt, Stony-cress Complex
- Glendenning, Very Stony Complex
- Graycalm-menahga Complex
- Greenwood And Beseman Soil
- Grettum Loamy Sand
- Haugen, Very Stony-Greenwood
- Haugen, Very Stony Complex
- Haugen-rosholt Complex
- Karlsborg-grettum-perida Complex
- Keweenaw-pence-sarona Complex
- Keweenaw-sayner-vilas Complex
- Loxley Mucky Peat
- Magnor, Very Stony Complex
- Mahtomedi Loamy Sand

- Mahtomedi-cress Complex
- Meehan Loamy Sand
- Meenon Loamy Sand
- Menahga And Mahtomedi Soils
- Minocqua Muck
- Newson Muck
- Oesterle Sandy Loam
- Ossmer Silt Loam
- Perchlake Loamy Fine Sand
- Perida Loamy Sand
- Plover Fine Sandy Loam
- Rib Silt Loam
- Rosholt Sandy Loam
- Scoba Sandy Loam

- Sconsin Silt Loam
- Scott Lake Sandy Loam
- Seelyville And Cathro Soils
- Seelyville And Markey Soils
- Sissabagama Loamy Sand
- Simlake Sandy Loam
- Spoonerhill, Stony Complex
- Spoonerhill Stony-Cress Comp
- Winterfield-totagatic Complex
- Wurtsmith Loamy Sand